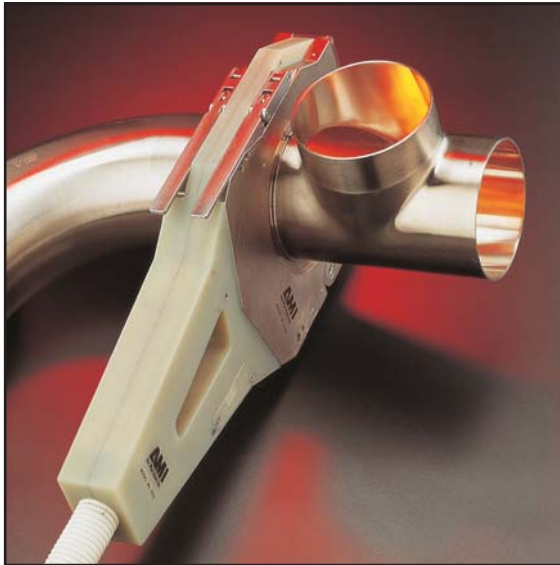


MODEL 8 NARROW WELD HEAD SERIES



Model 8-4000 shown with fitting-to-fitting weld.



Model 8-6625 shown with 6" tee fitting.

Ideal For:

- Fabrication shops
- Food, dairy and beverage industries
- Biomedical / pharmaceutical installations
- Semiconductor fabrication facilities and high-purity piping installations
- Vacuum and exhaust fittings
- CIP panel construction and valve clusters / headers
- Sanitary ferrule and short-tangent weld fittings

Features:

- Orbital weld heads for fusion welding of fitting to fitting, fitting to tube, and tube to tube applications
- Narrow head width accommodates most "standard" tube fittings
- Highly efficient liquid cooling of both internal and external components allows high duty-cycle usage
- Model 8-2000 size range: 0.25" O.D. to 2.00" O.D. (6,35mm to 52mm O.D.)
- Model 8-4000 size range: 0.50" O.D. to 4.00" O.D. (12,7mm to 104mm O.D.)
- Model 8-6625 size range: 2.00" O.D. to 6.625" O.D. (51mm to 169mm O.D.)
- All-gear drive mechanism
- Compatible with all Arc Machines' power supplies

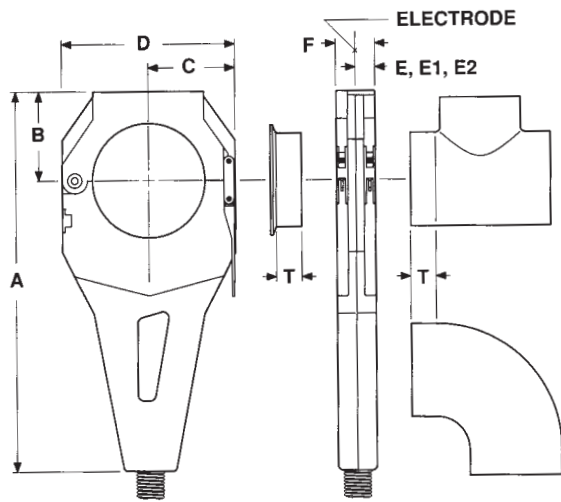
MODEL 8 NARROW WELD HEAD SERIES

The family of Model 8 series orbital weld heads are designed for fusion (TIG) welding of tube, thin-wall pipe and fittings through the range of 0.250" (6.3mm) to 6.625" (168.3mm) O.D. The narrow width of these heads makes it ideal for fitting to fitting welds as well as other limited-clearance applications.

These weld heads incorporate a two-sided clamping mechanism. An independent set of clamp inserts on each side of the head hold the tubes or components in line and concentric. A wide range of sizes can be accommodated in each weld head by changing these inserts, which are available in inch and metric tube and pipe sizes, as well as non-standard sizes for custom applications. In addition, for applications requiring wider clamps, adapter rings are available to accommodate Model 9 series clamp inserts on the Model 8.

A key feature of the Model 8 series weld heads is its unique cooling system. When coupled with an AMI cooling unit, heat affected components are liquid cooled including the internal electrode gear, the clamp housings and the cables. This allows the welding of wall thicknesses up to 0.154" (4mm) or high duty-cycle applications.

A selection of optional accessories adds versatility to these weld heads. A Tungsten Extender is available to shift the electrode closer to one side, making it practical to weld certain short stick out components, and our Fitting Support Mandrel and Clamp Insert Spacer facilitate the welding of short (1/2" long) sanitary ferrules (and other similar components), without having to pre-tack.



Model 8-2000 shown with fitting-to-ferrule weld.

Weld Head Model No.	Tube / Pipe O.D. Range	Dimensions								T* minimum
		A	B	C	D	E*	E1**	E2***	F*	
8-2000	0.25" - 2.00"	13.44"	2.81"	2.75"	5.50"	0.85"	1.02"	1.52"	1.75"	0.85"
	6,35 - 52mm	341mm	72mm	70mm	140mm	21,6mm	25,9mm	38,6mm	44,5mm	21,6mm
8-4000	0.50" - 4.000"	16.25"	3.87"	3.75"	7.50"	0.85"	1.02"	2.14"	1.75"	0.85"
	12,7 - 104mm	413mm	98,3mm	95mm	190mm	21,6mm	25,9mm	54,3mm	44,5mm	21,6mm
8-6625	2.00" - 6.625"	20.26"	5.42"	5.50"	11.00"	0.85"	—	—	1.75"	0.85"
	51 - 169mm	515mm	138mm	140mm	280mm	21,6mm	—	—	44,5mm	21,6mm

To weld fittings or ferrules with dimension "T" less than shown here, please contact AMI factory, sales offices or one of our representatives for recommendations.

* "E, F and T" dimensions with standard Model 8 (narrow) clamp inserts.

** "E1" dimension with adapter ring & standard Model 9 clamp insert.

*** "E2" dimension with adapter ring & extra wide Model 9E clamp insert.

Technical Data

Process:	GTAW (TIG) Fusion only	Electrode Size:	1/16" and 3/32"
Travel Motor:	D.C., P.M., D.C. Tachometer	Cable Length:	25 ft. (7,6m) when connected to adapter cable (included with power supply)
Head Weight:	8-2000: 6 lbs. (2,7 kg)	Rotor RPM:	8-2000: 0.1 - 10.0 RPM
	8-4000: 10 lbs. (4,5 kg)		8-4000: 0.1 - 10.0 RPM
	8-6625: 17 lbs. (7,7 kg)		8-6625: 0.1 - 2.0 RPM
Recommendation:	Water cooling is recommended		

ARC MACHINES, INC.

Specifications subject to change without notice.

Made in the U.S.A.

Arc Machines Inc., AMI and **AMI** are registered trademarks of Arc Machines, Inc.