

Superior Solutions for Sheet Metal Fabricators

# Mate Ultra<sup>®</sup> Multi Tool Systems

- 8 station
- 3 station

**New!**



mate.com/ultra

**Part Number**

**Mate Tooling Lasts Longer**

1295 Lund Boulevard, Anoka, Minnesota 55303 USA  
Call 800.328.4492 (1.763.421.0230) Fax 800.541.0285 (1.763.421.0285) mate.com



# Mate Ultra<sup>®</sup> Multi Tool Systems

## 8 station and 3 station

### For Thick Turret Punch Presses

**New!**

Mate is a world-leading supplier of multi tool systems for high performance punch presses.

The new Mate Ultra<sup>®</sup> Multi Tool assemblies for thick turret punch presses\* make full use of the advantages of Mate Ultra TEC<sup>®</sup> punches, strippers and Slug Free<sup>®</sup> dies. They provide complete compatibility with existing tooling inventory for added convenience. These assemblies are designed and engineered as an integral part of the high performance machines in which they operate.

Mate Ultra Multi Tools fit into 3-1/2" D-Index stations and are available in two versions for maximum flexibility.

- The Mate Ultra Multi Tool 8 station assembly accepts Ultra TEC 1/2" A station punches, strippers, and Slug Free dies with a maximum punch diagonal of 0.500(12.70). The assembly is configured to accept four shaped tools and four round tools. The precision internal keyways allow 0, 45 and 90 degree angle settings to be achieved.
- The Mate Ultra Multi Tool 3 station assembly accepts Ultra TEC 1-1/4" B station punches, strippers, and Slug Free dies with a maximum punch diagonal of 1.250 (31.70). Each tool position can achieve 0, 45 and 90 degree angle settings.

Standard Ultra TEC<sup>®</sup> Tooling:

Mate Ultra Multi Tools accept standard Ultra TEC punches for exceptional life between regrinds, strippers with recess for additional 0.118(3.00) punch grind life, and Slug Free<sup>®</sup> dies to eliminate slug pulling and increase piece part quality.



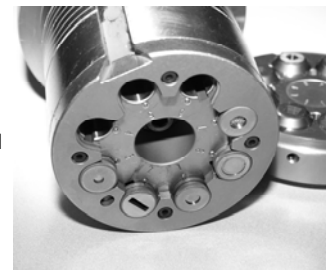
Quick Tool Change:

The twist-lock design of the upper assembly allows tools to be changed in seconds, without the need for additional hand tools, and without the need for disassembly. Faster tool changes optimize machine productivity and efficiency.



Integral Punch Length Adjustment:

Each punch length can be independently adjusted to ensure the precise punch-to-stripper lead is maintained for optimum punching performance across a wide range of material thickness from 0.020(0.50) to 0.157(4.00).



The Mate Ultra Multi Tool assemblies deliver added flexibility:

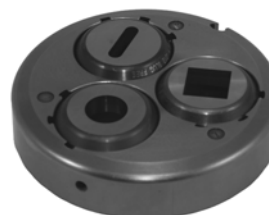
- ▶ Freedom in nesting
- ▶ Versatility in tooling
- ▶ Reduced set-up times
- ▶ More tooling capacity

8-Station  
Up to 0.500(12.70)  
Upper: MATE00967<sup>1</sup>  
Lower: MATE00968<sup>1</sup>



Patent Pending

3-Station  
Up to 1.250(31.75)  
Upper: MATE00969<sup>1</sup>  
Lower: MATE00970<sup>1</sup>



Patent Pending

<sup>1</sup>Part numbers for Multi Tool assemblies to not include punches and dies.