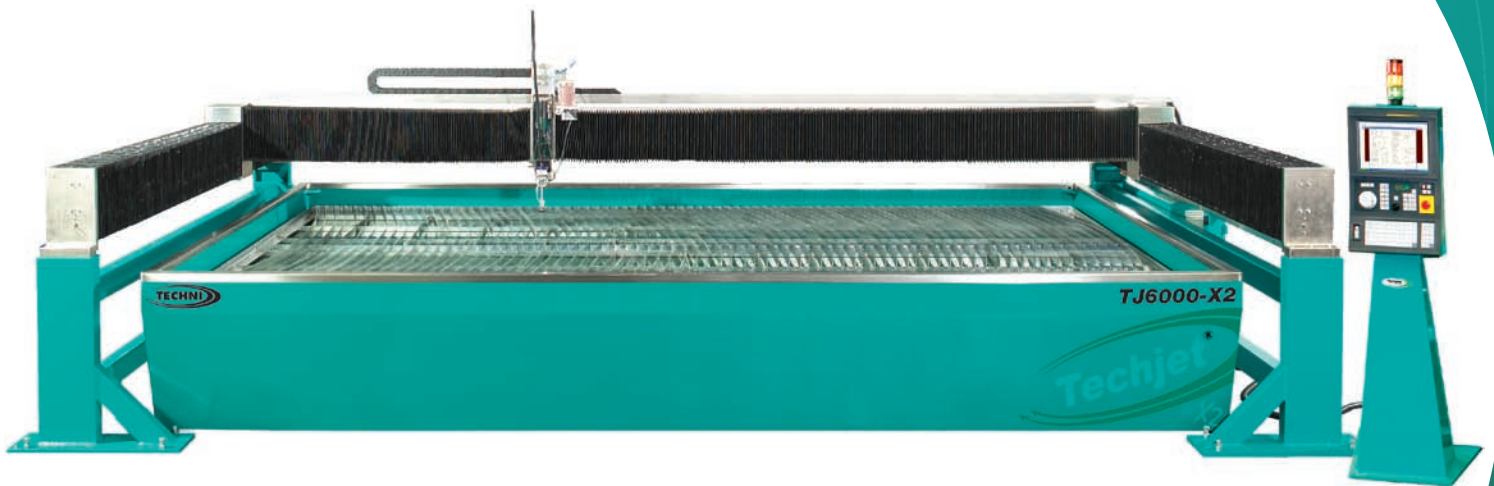


TJ6000-X2®



Waterjet Cutting System



Techjet-X2® "Premium Series"

The Techjet-X2® series is the latest in our evolution of innovative products to create a precision, easy-to-operate, safe and highly reliable Waterjet Cutting Machine. The Techjet-X2® is built to the highest tolerances and incorporates Linear Scale Feedback to ensure the highest accuracy of motion in the industry. By mapping the entire cutting area with a laser-calibrated digital encoder, the motion system can deliver positional accuracy of 0.0005" (0.01mm).



www.techniwaterjet.com
sales@techniwaterjet.com

Techjet-X2® Features

- Linear Encoder Feedback with laser-calibrated mapping, offers the greatest accuracy in the industry.
- Fully enclosed bellows to completely protect the linear bearings and drive system.
- Stainless Steel apron to protect the machine when loading/unloading.
- Power 'Z' axis.
- Precision Stainless Steel Band drive providing smooth movement at rapid speeds with extreme accuracy.

- Tech-Sense™ to monitor the cutting head and pause the program prior to any blockage, making "Lights Out" operating a reality.
- AT2010 controller with MPEG Feed Wheel.
- Crash Sensing Break Away Head to protect your valuable investment.
- High or Low pressure cutting and piercing.
- Self diagnostic alarms window.
- Localized controls.
- Rotating control panel with retractable mouse pad.

Specifications

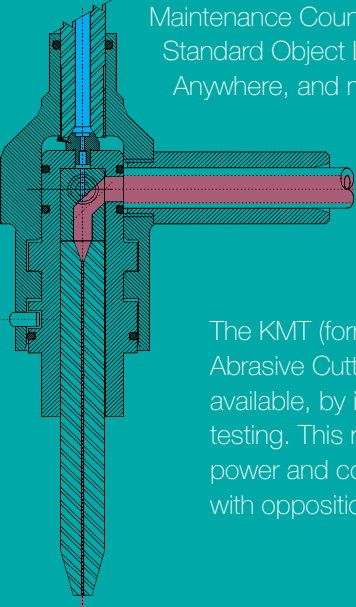
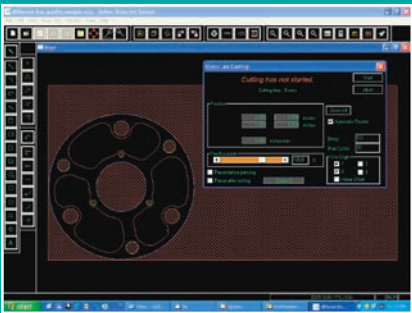
Machine Size (L, W, H) (Does not include intensifier or control cabinet)	13' 10" x 26' 3" x 6' 6" (4200 x 8000 x 2000 mm)
Machine weight (empty)	4000 lbs (1800 kg) without tank 13350 lb (6050 kg) with tank
Machine weight (with water)	45900 lbs (20800 kg)
Cutting table size	10' 6" x 20' 5" (3200 x 6250 mm)
Cutting Area	10' x 20' (3050 x 6100 mm)
Accuracy of motion*	0.001" (± 0.025mm)
Repeatability of motion	0.0005" (± 0.015 mm)
Max Air speed	1000 ipm (25m/min)
Max cutting speed	1000 ipm (25m/min)
Max cutting pressure	60000 psi (4137 bar)
Max material thickness**	6" (150 mm)
Due to constant endeavour to improve the machine, the specification may be changed without prior notice. * Refer to machine specifications on website for details. ** With 4" nozzle tube.	
LARGER MACHINES AND SPECIALS CAN BE CUSTOM BUILT TO YOUR REQUIREMENTS.	

Options

- 1/2 ton (500kg) Jib arm and 2 stage vacuum end-effector for easy material handling.
- Waste garnet recovery system.
- Abrasive Waste Removal Systems from 200 -1000lbs (100-500kg) capacity.
- Twin cutting heads for increased production.
- Submerged cutting for almost silent operation.
- Floating 'Z' axis to maintain 'stand-off' on warped materials.
- Text Messaging protocol which enables 2-way communication between machine and mobile phone.
- Light Curtain Guarding System ensures maximum worker safety.
- EZY-Load material loading mechanisms available in 250lb (120kg), 660lb (300kg), 1100lb (500kg) load capacities.

Every Techjet-X2® comes standard with Softec™ Waterjet Cutting Software, which has been developed by Techni Waterjet with two very clear goals in mind:

- To cut parts at the minimum cost with the greatest accuracy,
 - To have a simple and intuitive interface with the operator.
- The result, is a comprehensive "All-In-One" Windows based software, that is specifically designed for waterjet cutting. This maximizes productivity, and anyone with PC experience can learn to use quickly and easily. Softec™ incorporates many unique features, including: DXF Importation, Focusing Tube Wear Compensation, Off-site Notification, Multiple Origin Points, Maintenance Counters, Auto Mating Part Clearance, Standard Object Library, Re-start Cutting from Anywhere, and many, many more.



The KMT (formerly Ingersol-Rand) Autoline Abrasive Cutting Head, is the most efficient available, by independent US Government testing. This results in you using less garnet, power and consumables per inch of cut than with opposition cutting heads.

TW-60x2a

Service • Quality • Reliability

Techni Waterjet is committed to offering machines of the highest quality. The Techjet® has been designed specifically for the very tough abrasive waterjet environment. It uses a minimum of moving parts, which have been manufactured from corrosion resistant materials. This ensures the reliability of the Techjet® machines for many years after their installation. This is all backed up by highly trained service technicians, who will treat any problem you might encounter with the urgency you, our "valued" customer requires.

www.techniwaterjet.com
sales@techniwaterjet.com



HEAD OFFICE - Melbourne



USA HEAD OFFICE - Kansas City