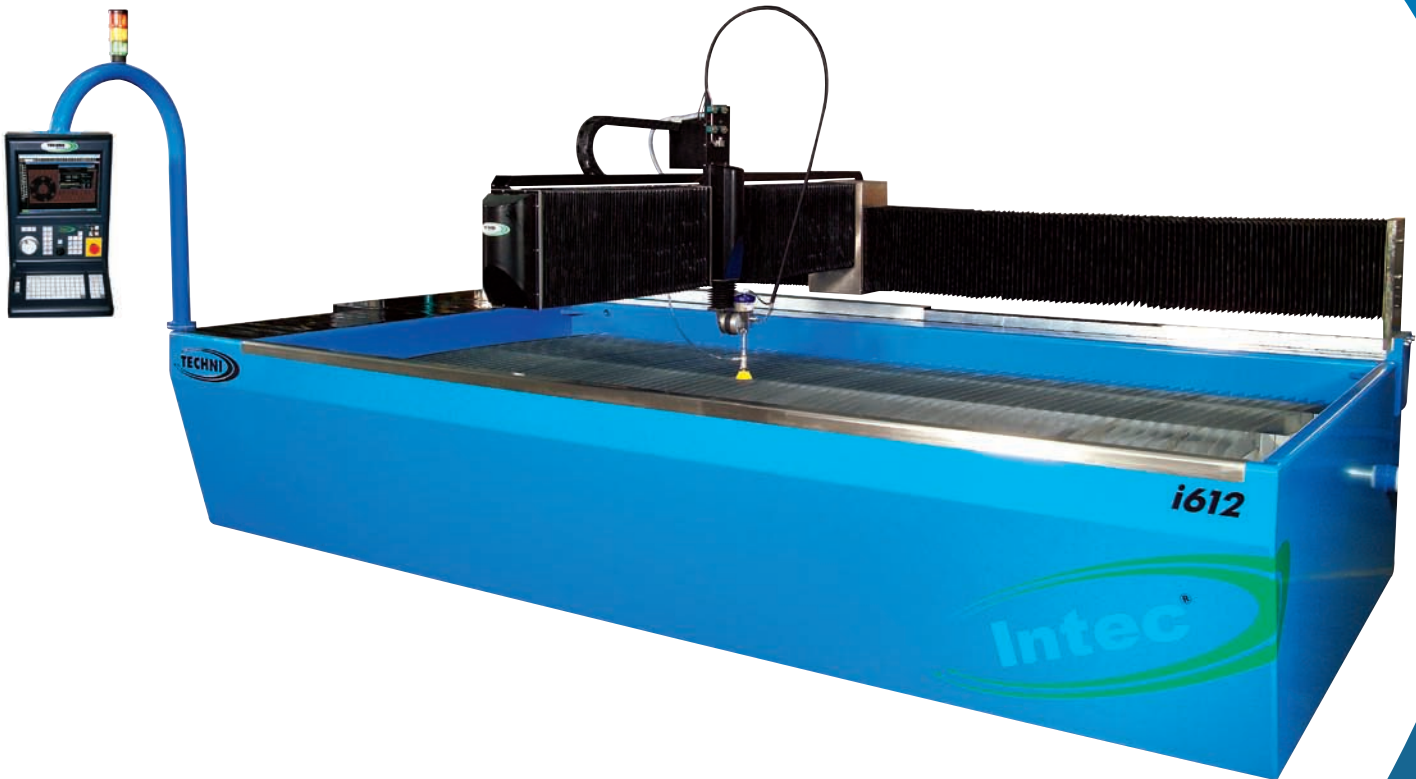




# i612

## Waterjet Cutting System



## Intec® "Value Series"

The Intec® range of Waterjet Cutting Systems represents the greatest "VALUE" for money available in the world of profile abrasive waterjet cutting. Through integration of a 50HP Intensifier Pump, the Intec® can cut almost any material up to 6" thick at maximum cutting speeds with minimum capital outlay. The 50HP Intensifier Pump also allows the option of Twin Cutting Heads to further increase your production capacity.



[www.techniwaterjet.com](http://www.techniwaterjet.com)  
[sales@techniwaterjet.com](mailto:sales@techniwaterjet.com)

The Integrated 50HP Intensifier Pump is capable of delivering 1 GPM at 55000 psi continuous running pressure, resulting in maximum cutting speeds. All high-pressure components are designed and manufactured exclusively for Intec® by KMT, the world leader in intensifier technology. Incorporating an 8" plunger stroke (the longest in the industry) results in fewer strokes and therefore less maintenance and "down time", increasing the "VALUE" of your investment.

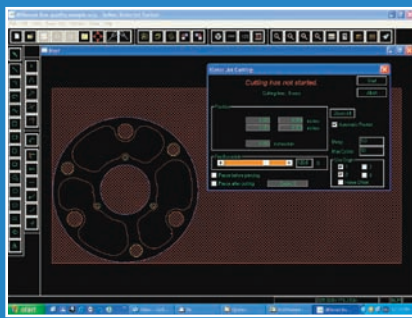


Every Intec® comes standard with Softec™ Waterjet Cutting Software, which has been developed by Techni Waterjet with two very clear goals in mind:

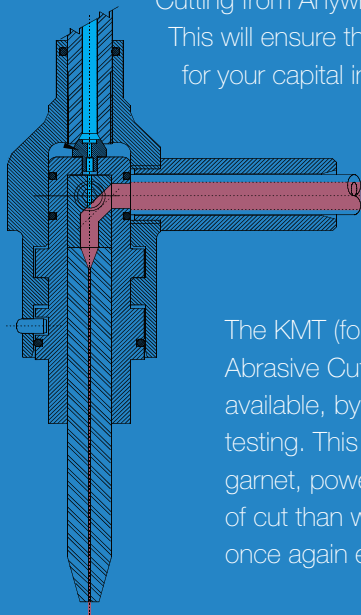
- To cut parts at the minimum cost with the greatest accuracy,
- To have a simple and intuitive interface with the operator.

The result, is a comprehensive "All-In-One" Windows based software, that is specifically designed for waterjet cutting. This maximizes productivity, and anyone with PC experience can learn to use quickly and easily. Softec™ incorporates many unique features, including:

DXF Importation, Focusing Tube Wear Compensation, Off-site Notification, Multiple Origin Points, Maintenance Counters, Auto Mating Part Clearance, Standard Object Library, Re-start



Cutting from Anywhere, and many, many more. This will ensure that you get maximum "VALUE" for your capital investment.



The KMT (formerly Ingersol-Rand) Autoline Abrasive Cutting Head, is the most efficient available, by independent US Government testing. This results in you using less garnet, power and consumables per inch of cut than with opposition cutting heads, once again ensuring increased "VALUE".

## Specifications

Machine Size (L, W, H) (Does not include intensifiers or bulk abrasive hopper)	9' 10" x 17' 8" x 6' 6" (3000 x 5400 x 2000 mm)
Machine weight (empty)	6500 lbs (2950 kg)
Machine weight (with water)	25350 lbs (11500 kg)
Cutting table size	6' 4" x 12' 10" (1950 x 3900 mm)
Cutting Area	6' x 12' (1830 x 3660 mm)
Accuracy of motion*	0.006" (± 0.15mm)
Repeatability of motion	0.002" (± 0.05 mm)
Max Air speed	1000 ipm (25m/min)
Max cutting speed	1000 ipm (25m/min)
Max cutting pressure	55000 psi (3800 bar)
Max material thickness**	6" (150 mm)

Due to constant endeavour to improve the machine, the specification may be changed without prior notice.

\* Refer to machine specifications on website for details. \*\* With 4" nozzle tube.

## Options

- Crash Sensing Break Away Head.
- 1/2 ton (500kg) Jib arm and 2 stage vacuum end-effector for easy material handling.
- Waste garnet recovery system.
- Abrasive Waste Removal Systems from 200 -1000 lbs (100-500kg) capacity.
- Twin cutting heads for increased production.
- Submerged cutting for almost silent operation.
- Floating 'Z' axis to maintain 'stand off' on warped materials.
- Text Messaging protocol which enables 2-way communication between machine and mobile phone.
- Tech-Sense™ to monitor the cutting head and pause the program prior to any blockage, making "Lights Out" operation a reality.
- Light Curtain Guarding System ensures maximum worker safety.
- EZY-Load material loading mechanisms available in 250lb (120kg), 660lb (300kg), 1100lb (500kg) load capacities.

## Service • Quality • Reliability

Techni Waterjet is committed to offering machines of the highest quality. The Intec® has been designed specifically for the very tough abrasive waterjet environment. It uses a minimum of moving parts, which have been manufactured from corrosion resistant materials. This ensures the reliability of the Intec® machines for many years after their installation. This is all backed up by highly trained service technicians, who will treat any problem you might encounter with the urgency you, our "valued" customer requires.

[www.techniwaterjet.com](http://www.techniwaterjet.com)

[sales@techniwaterjet.com](mailto:sales@techniwaterjet.com)



HEAD OFFICE - Melbourne



USA HEAD OFFICE - Kansas City